



MEDIUM FIT

- Stretch poplin
- 2-button cut-away collar
- Cross stitched mother-of-pearl effect buttons
- 2-button adjustable cuffs
 - a. Angular cuffs & square-shaped gauntlets
 - b. Additional cufflink buttonholes
- Short modern back yoke
- Inside lap seams for perfect finish
- Horizontal last buttonhole
- Square-shaped bottom hem side reinforcement
- Shorter length – can be worn untucked
- Curved bottom hem
- Darts at back panel

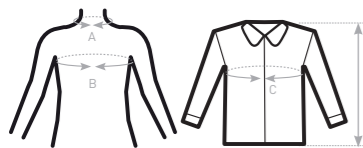


- 97% **combed** cotton - 3% elastane
- Poplin
- 135 g/m² **STRETCH**
- S > 4XL
- 1 pc/pack & 10 pcs/carton



DUO
CONCEPT
with B&C Black Tie LSL /women

SIZES [CM]



	US	S	M	L	XL	XXL	XXXL	4XL	5XL	6XL
B&C BLACK TIE LSL /M. SM P21	CM	37/38	39/40	41/42	43/44	45/46	47/48	49/50	-	-
A COLLAR TO FIT	INS	14,5 / 15	15,5	16 / 16,5	17 / 17,5	18	18,5 / 19	19,5	-	-
B CHEST TO FIT	CM	92 / 97	97 / 102	102 / 107	107 / 112	112 / 117	117 / 122	122 / 127	-	-
C CHEST SIZE	INS	36 / 38	38 / 40	40 / 42	42 / 44	44 / 46	46 / 48	48 / 50	-	-
D CENTER BACK LENGTH	CM	108	113	123	133	138	148	153	-	-
	CM	73	74	76	78	79	81	82	-	-

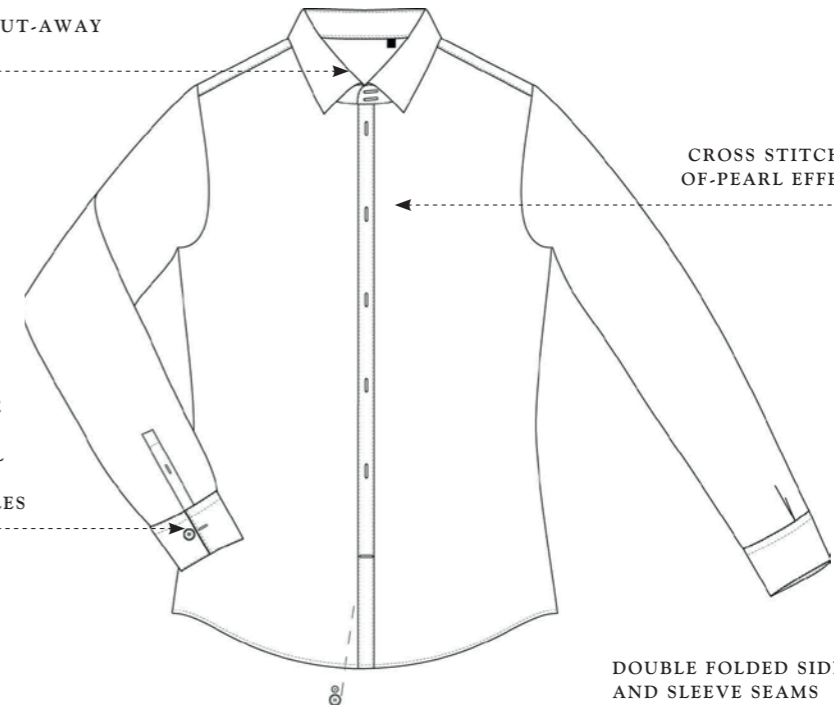


**STRETCH MEN'S LONG SLEEVED
EASY CARE POPLIN SHIRT**

2-BUTTON CUT-AWAY COLLAR

CROSS STITCHED MOTHER-OF-PEARL EFFECT BUTTONS

ANGULAR 2-BUTTON ADJUSTABLE CUFF WITH ADDITIONAL CUFFLINK BUTTONHOLES



DOUBLE FOLDED SIDE AND SLEEVE SEAMS

DARTS AT BACK PANEL

CURVED BOTTOM HEM WITH SQUARE-SHAPED SIDE REINFORCEMENT

